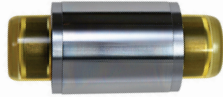


# Master Setting Discs



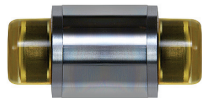
## Style #1



## Style #2



## Style #3



Master Setting Discs are used for setting comparators, snap gages and other precision gages and are furnished with insulating grips to prevent heat distortion.

### Direction of Tolerances

Unless otherwise specified, the gagemaker's tolerance will be applied bilaterally (split 1/2 plus 1/2 minus) on Styles #1 and #3. On Style #2 tolerances will be unilateral, minus on the "GO" section and plus on the "NO GO" section.

### How to Order

Please specify:

1. Quantity desired.
2. Exact diameter(s).\*
3. Style.
4. Tolerance and direction.
5. Marking.

\* Two diameters on Style #2

Chrome and Carbide  
also available

SIZE ABOVE - INCLUDING	CLASS	TOL.	STYLE 1 LENGTH	STYLE 2 LENGTH	STYLE 3 LENGTH
.105 to .150 2.67mm to 3.81mm	XX	.00002	3/4"	3/4"	3/8"
	X	.00004			
	Y	.00007			
	Z	.00010			
.150 to .230 3.81mm to 5.84mm	XX	.00002	7/8"	7/8"	7/16"
	X	.00004			
	Y	.00007			
	Z	.00010			
.230 to .365 5.84mm to 9.27mm	XX	.00002	1"	1"	1/2"
	X	.00004			
	Y	.00007			
	Z	.00010			
.365 to .510 9.27mm to 12.95mm	XX	.00002	1-1/8"	1-1/8"	9/16"
	X	.00004			
	Y	.00007			
	Z	.00010			
.510 to .825 12.95mm to 20.96mm	XX	.00002	1-1/4"	1-1/4"	5/8"
	X	.00004			
	Y	.00007			
	Z	.00010			
.825 to 1.135 20.96mm to 28.83mm	XX	.00003	1-3/8"	1-3/8"	11/16"
	X	.00006			
	Y	.00009			
	Z	.00012			
1.135 to 1.510 28.83mm to 38.35mm	XX	.00003	1-5/8"	1-5/8"	13/16"
	X	.00006			
	Y	.00009			
	Z	.00012			
1.510 to 2.010 38.35mm to 51.05mm	XX	.00004	1-7/8"	1-7/8"	7/8"
	X	.00008			
	Y	.00012			
	Z	.00016			
2.010 to 2.510 51.05mm to 63.75mm	XX	.00004	2"	2"	7/8"
	X	.00008			
	Y	.00012			
	Z	.00016			
2.510 to 3.010 63.75mm to 76.45mm	XX	.00005	2-1/8"	2-1/8"	1"
	X	.00010			
	Y	.00015			
	Z	.00020			
3.010 to 4.510 76.45mm to 114.55mm	XX	.00005	2-1/4"	2-1/4"	1"
	X	.00010			
	Y	.00015			
	Z	.00020			
4.510 to 6.510 114.55mm to 165.35mm	XX	.000065	2-1/4"	2-1/4"	1"
	X	.00013			
	Y	.00019			
	Z	.00025			
6.510 to 8.010 165.35mm to 203.45mm	XX	.00008	2-1/4"	2-1/4"	1"
	X	.00016			
	Y	.00024			
	Z	.00032			

CALL SWANSON FOR PRICING